

"High Frequency Ceramic Solutions"

2.4GHz / 5GHz Diplexer, EIA 0603, Low Loss, High Rejection

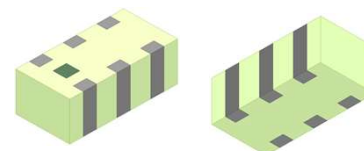
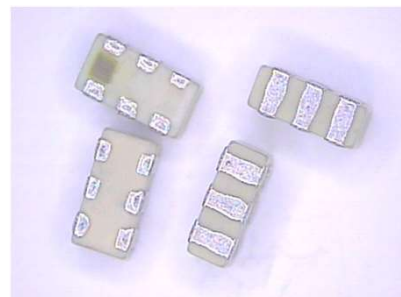
P/N 2450DP14Q5400

Detail Specification: 11/8/2019

Page 1 of 4

General Specifications

Part Number	2450DP14Q5400	
Passband (GHz)	2.4 - 2.5	4.9 - 5.95
Insertion Loss (dB)	0.27 typ. (0.35 max. @ 25°C 0.70 max. @-40~125°C)	0.39 typ. (0.48 max. @ 25°C 0.83 max. @-40~125°C)
Return Loss (dB)	17 typ. (10 min.)	17 typ. (10 min.)
Attenuation (dB)	23 typ. (21 min.) @4.8-5.0GHz 29 typ. (25 min.) @7.2-7.5GHz	30 typ. (27 min.) @ 0.824-2.2GHz 28 typ. (26 min.) @ 9.8-11.9GHz
Isolation (dB)	34 typ. (32 min.) @2.4-2.5GHz 30 typ. (23 min.) @5.0-6.0GHz	
Power Capacity	3W max. (CW)	
Reel Quantity	4,000	
Operating Temp.	-40°C to +125°C	
Recommended Storage Conditions for Un-used Product on T&R	+5°C to +35°C Humidity 45 - 75% RH 18 months max.	



(Top)

(Bottom)

Part Number Explanation

P/N Suffix	Packing Style	Bulk	Suffix = S	eg. 2450DP14Q5400S
		T & R	Suffix = T	eg. 2450DP14Q5400T
	Termination style	100% Tin	Suffix = None	eg. 2450DP14Q5400(T or S)
Evaluation Board		2450DP14Q5400-EB1SMA		

Not exactly what you are looking for and want to see our other diplexers? Go to:

<https://www.johansontechnology.com/diplexers>

Mechanical Dimensions

	In	mm
L	0.063 ± 0.004	1.6 ± 0.1
W	0.031 ± 0.004	0.8 ± 0.1
T	0.028 max.	0.7 max.
a	0.012 ± 0.002	0.3 ± 0.05
b	0.008 ± 0.002	0.2 ± 0.05
c	0.010 ± 0.002	0.25 ± 0.05
g	0.008 ± 0.002	0.2 ± 0.05
p	0.006 ± 0.001	0.15 ± 0.025

Terminal Configuration

1	Low Freq (2.45GHz) Band	4	GND
2	GND	5	Common Port
3	High Freq (5GHz) Band	6	GND

Johanson Technology, Inc. reserves the right to make design changes without notice.
All sales are subject to Johanson Technology, Inc. terms and conditions.



<https://www.johansontechnology.com>

4001 Calle Tecate • Camarillo, CA 93012 • TEL 805.389.1166 FAX 805.389.1821

Ver. 1.1

2019 Johanson Technology, Inc. All Rights Reserved

"High Frequency Ceramic Solutions"

2.4GHz / 5GHz Diplexer, EIA 0603, Low Loss, High Rejection

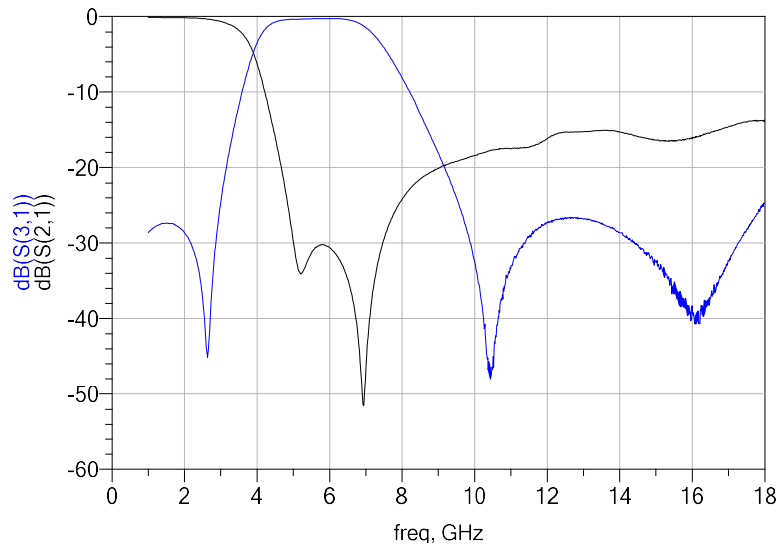
P/N 2450DP14Q5400

Detail Specification: 11/8/2019

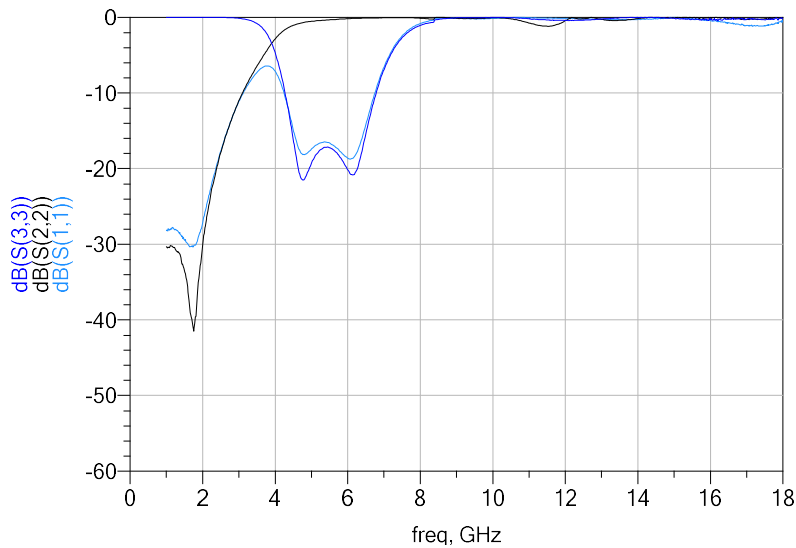
Page 3 of 4

Typical Electrical Characteristics (T=25 °C)

Attenuation



Return Loss



Johanson Technology, Inc. reserves the right to make design changes without notice.
All sales are subject to Johanson Technology, Inc. terms and conditions.



Ver. 1.1

<https://www.johansontechnology.com>

4001 Calle Tecate • Camarillo, CA 93012 • TEL 805.389.1166 FAX 805.389.1821

2019 Johanson Technology, Inc. All Rights Reserved

"High Frequency Ceramic Solutions"

2.4GHz / 5GHz Diplexer, EIA 0603, Low Loss, High Rejection

P/N 2450DP14Q5400

Detail Specification: 11/8/2019

Page 4 of 4

RoHS Compliance

<https://www.johansontechnology.com/rohs-compliance>

Packaging information

<https://www.johansontechnology.com/tape-reel-packaging>

Soldering Information

<https://www.johansontechnology.com/ipcsoldering-profile>

Layout Files, s-parameters and any other technical questions

<https://www.johansontechnology.com/ask-a-question>

MSL Info

<https://www.johansontechnology.com/msl-rating>

Recommended Storage Condition and Max Shelf Life

<https://www.johansontechnology.com/recommended-storage-conditions>

Antenna layout and tuning techniques

<https://www.johansontechnology.com/tuning>

Antenna layout review, tuning, and characterization services

<https://www.johansontechnology.com/ipc-antenna-services>

Johanson Technology, Inc. reserves the right to make design changes without notice.
All sales are subject to Johanson Technology, Inc. terms and conditions.



Ver. 1.1

<https://www.johansontechnology.com>

4001 Calle Tecate • Camarillo, CA 93012 • TEL 805.389.1166 FAX 805.389.1821

2019 Johanson Technology, Inc. All Rights Reserved