

High Frequency Ceramic Solutions

AEC-Q200 Qualified

5.3GHz Directional Coupler/ Low Pass Filter Combo Passive

P/N 5300CF15A0950E-AEC

Detail Specification: 11/29/2018

Page 1 of 4

General Specifications

Part Number	5300CF15A0950E-AEC	Impedance	50 Ω
Frequency (MHz)	4900 - 5850	Operating Temperature	-40 to +105°C
Insertion Loss	0.8 dB max.	Recommended Storage Condition for Un-used T&R	+5 to +35°C Humidity 45~75%RH 18 months max.
Return Loss	20 dB min.		
Attenuation (min.)	20 dB @ 2 x Fo		
Coupling	15 ± 1 dB	Reel Quantity	4000
Isolation	22 dB min.	Power Rating	2W max. (CW)

P/N Suffix	Packaging Style	Bulk	Suffix = S	Eg. 5300CF15A0950S-AEC
		T & R	Suffix = E	Eg. 5300CF15A0950E-AEC
	Termination Style	100% Tin	Suffix = None	Eg. 5300CF15A0950(E or S)-AEC
Evaluation Board (2-Port SMA EVB)		5300CF15A0950-EB2SMA		

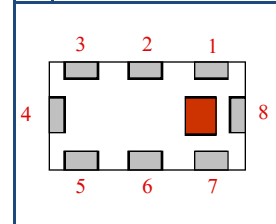
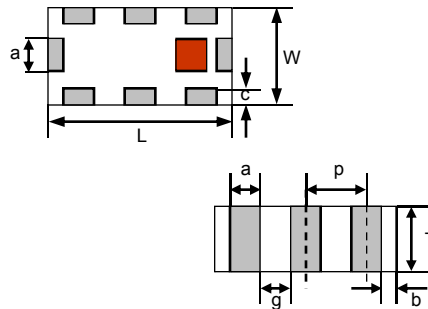
*<https://www.johansontechnology.com/tape-reel-packaging>

Terminal Configuration

No.	Function
1	Termination
2	GND
3	GND
4	Input
5	Coupled Out
6	GND
7	GND
8	Output

Mechanical Dimensions

	In	mm
L	0.079 ± 0.004	2.00 ± 0.10
W	0.049 ± 0.004	1.25 ± 0.10
T	0.027 ± 0.004	0.70 ± 0.10
a	0.012 ± 0.004	0.30 ± 0.10
b	0.008 ± 0.004	0.20 ± 0.10
c	0.012 +0.004/-0.008	0.30 +0.1/-0.2
g	0.014 ± 0.004	0.35 ± 0.10
p	0.026 ± 0.002	0.65 ± 0.05



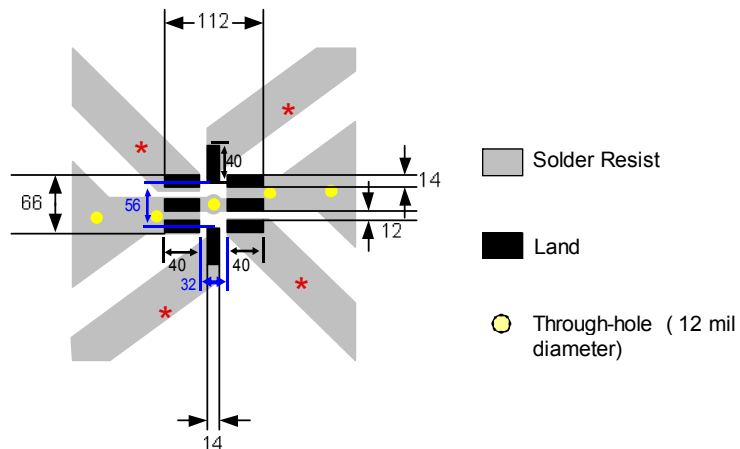
Mounting Considerations

Mount these devices with brown mark facing up.

Line width should be designed to provide 50 ohm impedance, depending on PCB material and thickness

Units: mils

* Line width should be designed to provide 50 ohm impedance, depending on PCB material and thickness



Johanson Technology, Inc. reserves the right to make design changes without notice.

All sales are subject to Johanson Technology, Inc. terms and conditions.



<https://www.johansontechnology.com>

4001 Calle Tecate • Camarillo, CA 93012 • TEL 805.389.1166 FAX 805.389.1821

Ver. 2.0

2018 Johanson Technology, Inc. All Rights Reserved