

"High Frequency Ceramic Solutions"

3.5 GHz (ETSI Band) Balun/Filter Combination

P/N 3500FB39A0050

Detail Specification: 11/27/06

Page 1 of 2

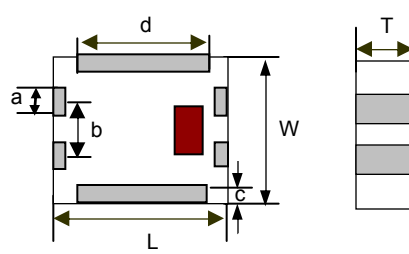
General Specifications

Part Number	3500FB39A0050
Frequency (MHz)	3400 - 3600
Unbalanced Impedance	50 Ω
Balanced Impedance	50 Ω
Insertion Loss	2.9 dB max.
Return Loss	9.5 dB min.
Phase Difference	180° \pm 12
Amplitude Difference	1.5 dB max.
Operating + Storage Temp.	-40 to +85°C
Reel Quantity	4000
Power Capacity	0.5 watt max.

Attenuation (dB)	35 min. @ 680~720MHz
	35 min. @ 1088~1152MHz
	45 min. @ 2040~2160MHz
	32 min. @ 2720~2880MHz
	15 min. @ 4080~4320MHz
	20 min. @ 4760~5040MHz
	25 min. @ 5440~5760MHz
	20 min. @ 7480~7920MHz
15 min. @ 8840~9360MHz	

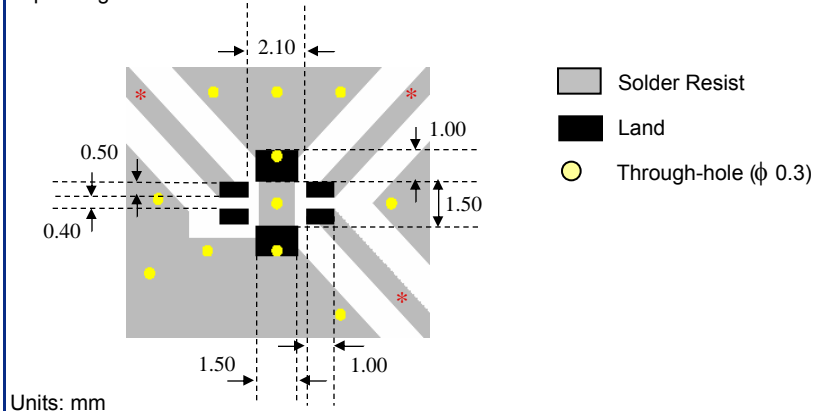
Mechanical Dimensions

	In	mm
L	0.098 \pm 0.008	2.50 \pm 0.20
W	0.079 \pm 0.008	2.00 \pm 0.20
T	0.043 \pm 0.004	1.10 \pm 0.10
a	0.016 \pm 0.008	0.40 \pm 0.20
b	0.031 \pm 0.008	0.80 \pm 0.20
c	0.012 +.004/-.008	0.30 +0.1/-0.2
d	0.075 \pm 0.008	1.90 \pm 0.20



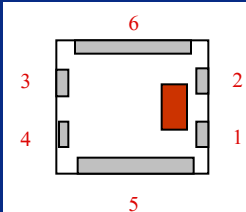
Mounting Considerations

* Line width should be designed to match 50 Ω characteristic impedance, depending on PCB material and thickness.



Terminal Configuration

No.	Function
1	Unbalanced Port
2	NC or DC Feed
3	Balanced Port
4	Balanced Port
5	GND
6	GND



Johanson Technology, Inc. reserves the right to make design changes without notice.
All sales are subject to Johanson Technology, Inc. terms and conditions.

"High Frequency Ceramic Solutions"

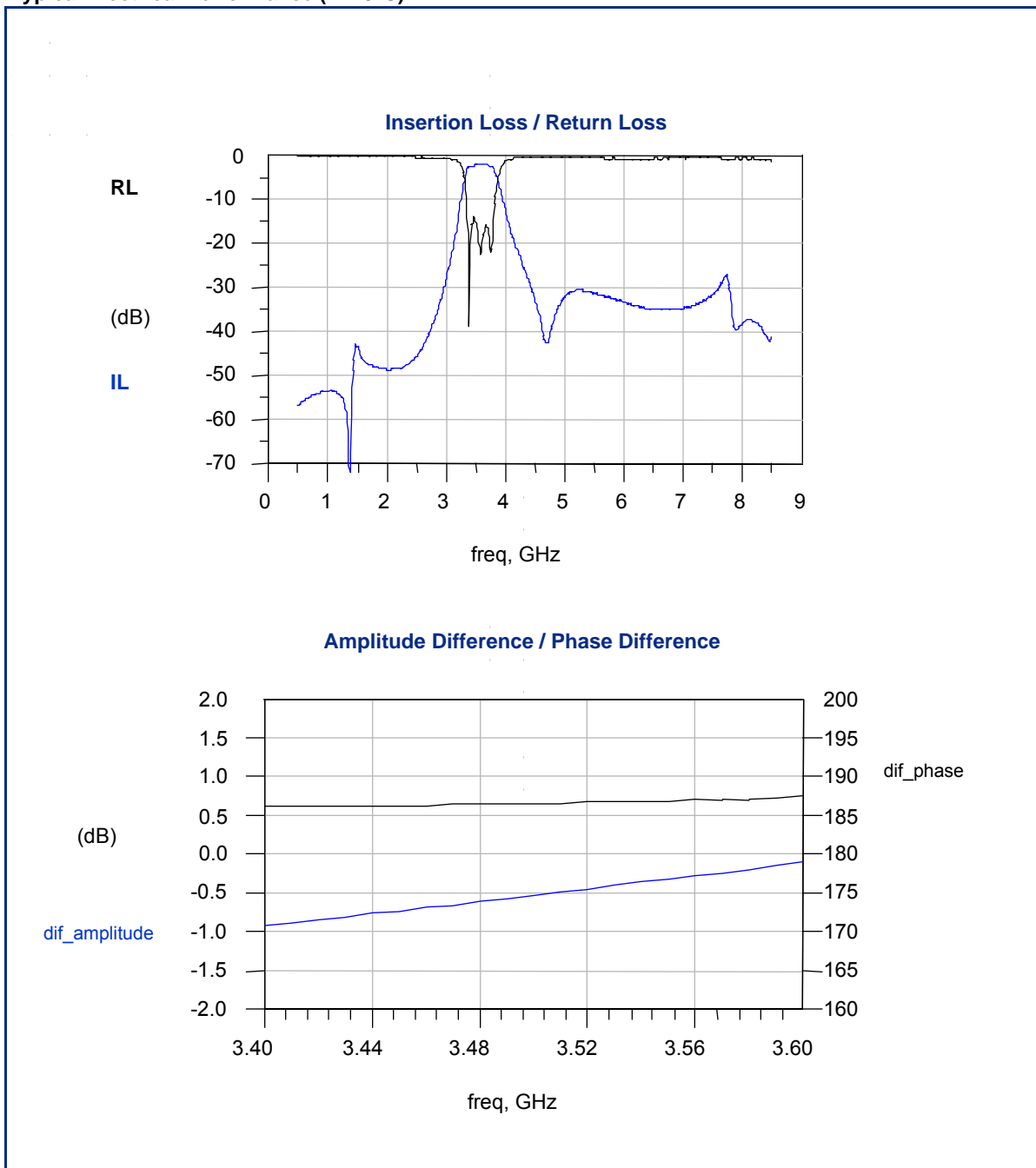
3.5 GHz (ETSI Band) Balun/Filter Combination

P/N 3500FB39A0050

Detail Specification: 11/27/06

Page 2 of 2

Typical Electrical Performance (T=25°C)



Johanson Technology, Inc. reserves the right to make design changes without notice.
All sales are subject to Johanson Technology, Inc. terms and conditions.



www.johansontechnology.com

931 Via Alondra • Camarillo, CA 93012 • TEL 805.389.1166 FAX 805.389.1821

2003 Johanson Technology, Inc. All Rights Reserved