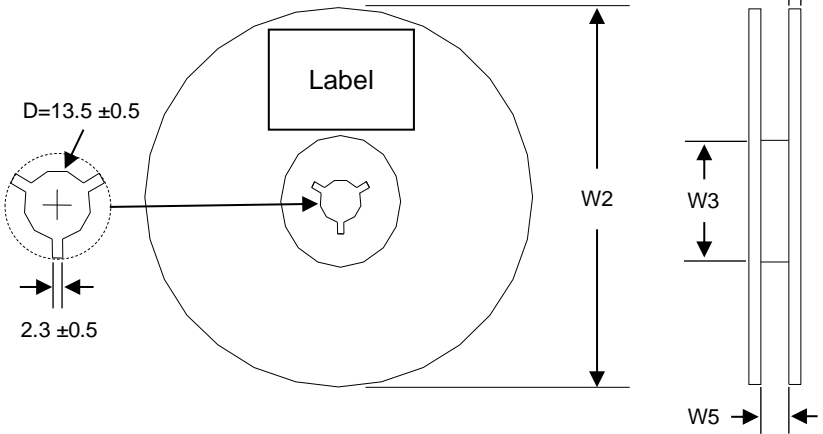


Reel Specifications

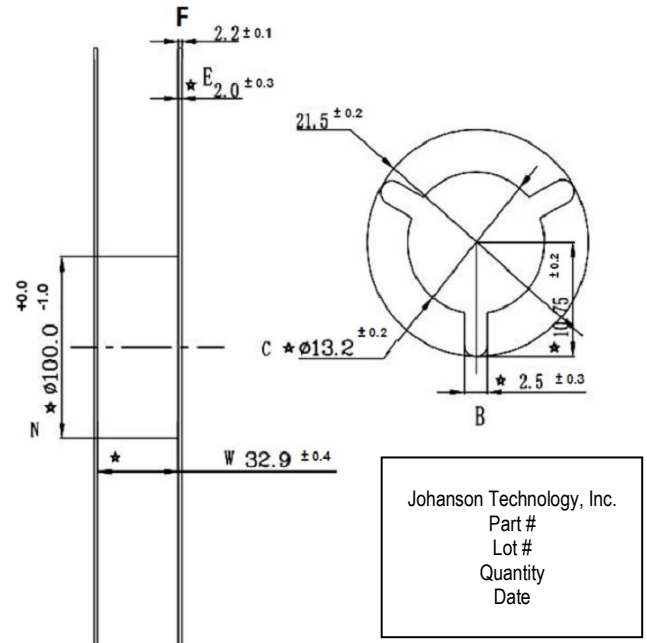
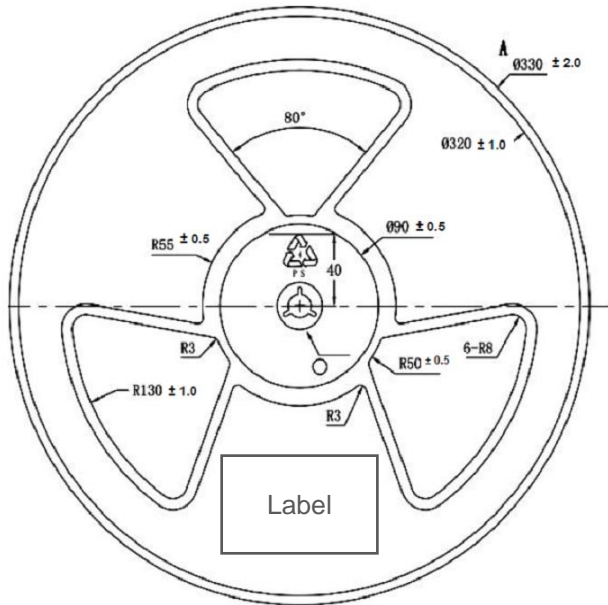
Units in mm



Size Code	W2	W3	W4	W5
AT07 / AT14	178 ± 1	60 ± 1	1.4 ± 0.2	9.0 ± 0.3
AT18 / AT43 / AT44 / AT45 / AT46 / AT47	178 ± 1	60 ± 1	1.4 ± 0.2	17 ± 0.5
AT51	178 ± 1	60 ± 1	1.4 ± 0.2	25 ± 0.5
AD54 / AT54 / AT62 (25050)	330 ± 2	178 ± 2	2.0 ± 0.2	45 ± 0.5

JTI Size Code	Size Metric	Reel Quantity
AT07	1005	10,000
AD14 / AT14	1608	4,000
AD18 / AT18	3216	3,000
AT42	5020	2,000
AT43	7020	1,000
AT44	4530	1,000
AT45	9520	1,000
AD46	8516	1,000
AD47	10032	1,000
AT51	10060	1,000
AD54 / AT54	15040	500
AT62	25050 / 120120	500 / 600

For AT62 (120120)

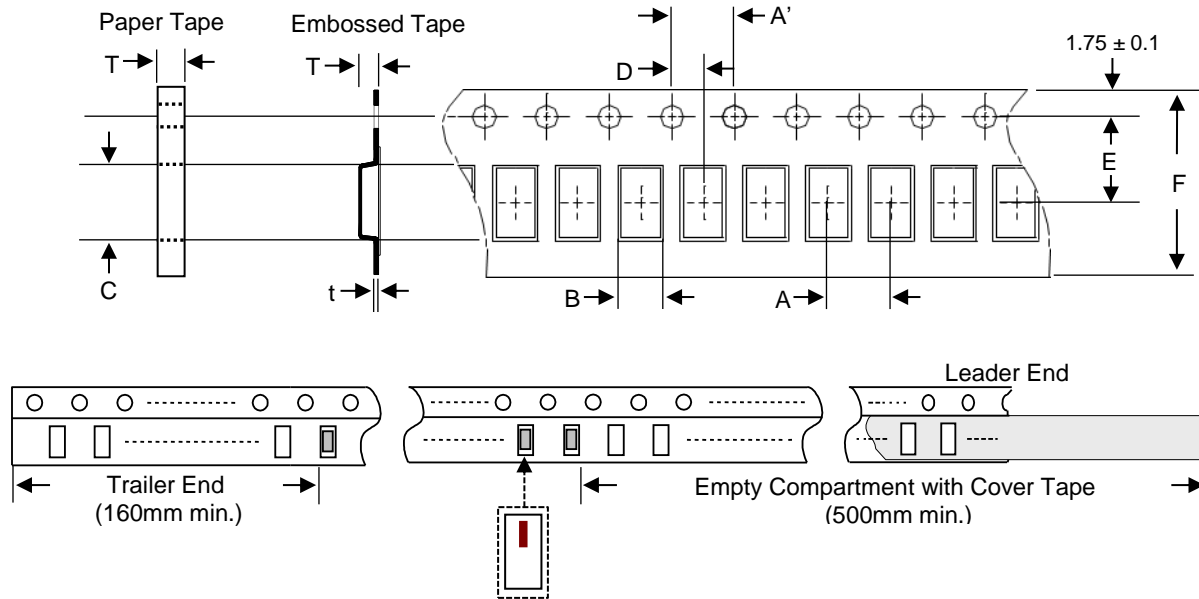


Johanson Technology, Inc.
 Part #
 Lot #
 Quantity
 Date

Johanson Technology, Inc. reserves the right to make design changes without notice.

All sales are subject to Johanson Technology, Inc. terms and conditions.

Tape Specifications



Size Code	Size Metric	A	A'	B	C	D	E	F	t	T
		AT07	1005	2.0 ± 0.05	4.0 ± 0.1	0.62 ± 0.03	1.12 ± 0.03	2.0 ± 0.05	3.5 ± 0.05	8 ± 0.1
AD14 / AT14	1608	4.0 ± 0.1	4.0 ± 0.1	0.95 ± 0.1	1.80 ± 0.1	2.0 ± 0.1	3.5 ± 0.1	8 ± 0.1	-	0.60 ± 0.03
AD18 / AT18	3216	4.0 ± 0.1	4.0 ± 0.1	1.88 ± 0.1	3.50 ± 0.1	2.0 ± 0.05	3.5 ± 0.05	8 ± 0.1	0.20 ± 0.05	1.40 Max.
AT42	5020	4.0 ± 0.1	4.0 ± 0.1	2.40 ± 0.1	5.40 ± 0.1	2.0 ± 0.05	5.5 ± 0.1	12 ± 0.1	0.20 ± 0.05	1.90 Max.
AT43	7020	4.0 ± 0.1	4.0 ± 0.1	2.40 ± 0.1	7.30 ± 0.1	2.0 ± 0.05	5.5 ± 0.1	12 ± 0.1	0.22 ± 0.05	1.45 ± 0.1
AT44	4530	8.0 ± 0.1	4.0 ± 0.1	3.66 ± 0.1	4.95 ± 0.1	2.0 ± 0.1	5.5 ± 0.1	12 ± 0.1	0.22 ± 0.05	1.75 ± 0.1
AT45	9520	4.0 ± 0.1	4.0 ± 0.1	2.35 ± 0.1	9.70 ± 0.1	2.0 ± 0.05	7.5 ± 0.1	16 ± 0.1	0.22 ± 0.05	1.4 ± 0.1
AD46	8516	4.0 ± 0.1	4.0 ± 0.1	1.85 ± 0.1	8.70 ± 0.1	2.0 ± 0.05	7.5 ± 0.1	16 ± 0.2	0.25 ± 0.05	1.4 ± 0.1
AD47	10032	8.0 ± 0.1	4.0 ± 0.1	3.45 ± 0.1	10.30 ± 0.1	2.0 ± 0.05	7.5 ± 0.1	16 ± 0.2	0.25 ± 0.05	1.7 ± 0.1
AT51	10060	8.0 ± 0.1	4.0 ± 0.1	5.40 ± 0.1	11.30 ± 0.1	2.0 ± 0.1	11.5 ± 0.1	24 ± 0.3	0.30 ± 0.05	1.8 ± 0.1
AD54 / AT54	15040	8.0 ± 0.1	4.0 ± 0.1	4.35 ± 0.1	15.40 ± 0.1	2.0 ± 0.1	11.5 ± 0.1	24 ± 0.3	0.30 ± 0.05	$1.8 \pm 0.1 / 3.5 \pm 0.1$
AT62	25050	12 ± 0.1	$4.0 \pm 0.$	5.35 ± 0.1	25.4 ± 0.1	2.0 ± 0.1	20.2 ± 0.1	44 ± 0.3	0.30 ± 0.05	1.4 ± 0.1

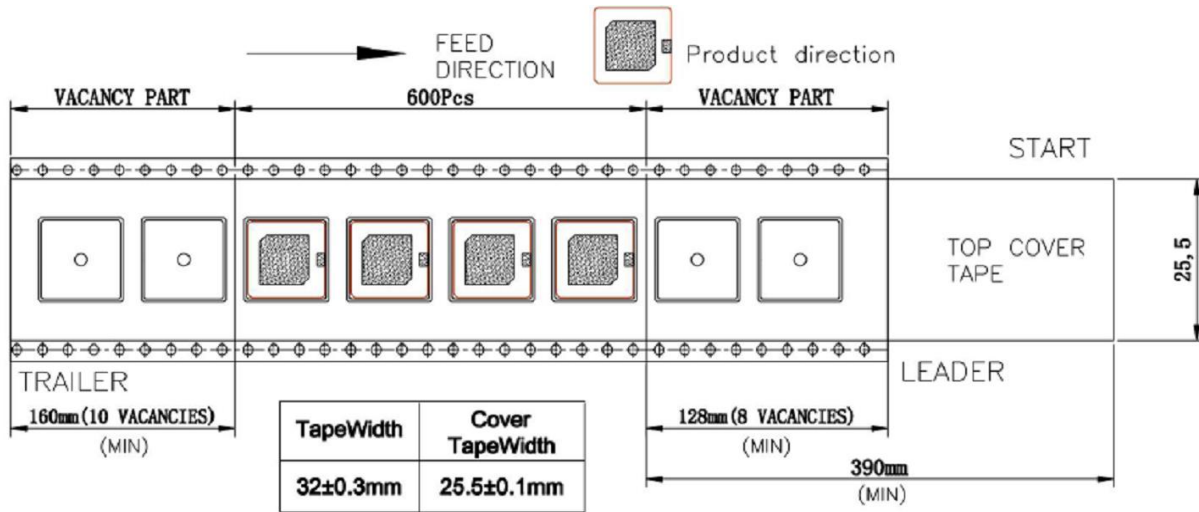
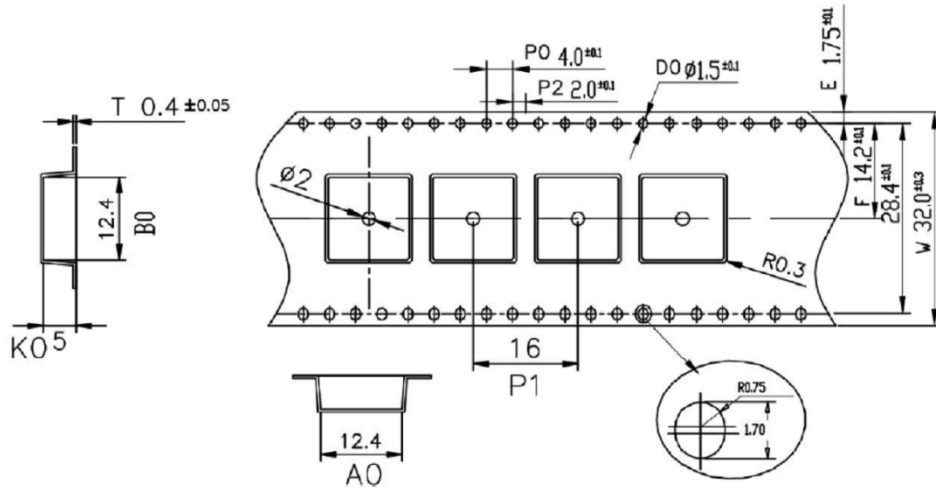
Johanson Technology, Inc. reserves the right to make design changes without notice.

All sales are subject to Johanson Technology, Inc. terms and conditions.

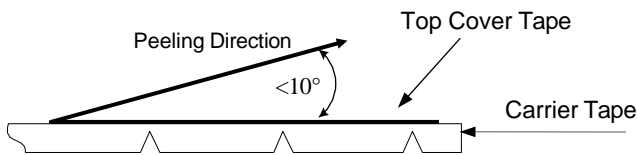


Tape Specifications

For AT62 (120120)



Tape Peel Strength



Tape and Reel (material and size)	Code
7" Reel Paper Tape	T
7" Reel Embossed Tape	E
13" Reel Embossed Tape	U

Peel-off force should be in the range of 0.1 – 0.6 N (for AT07, AT14, AT18) and 0.2 – 1.20 N (for AT42, AT43, AT44, AT45, AT46, AT47, AT51, AT54, AT62) at a peel-off speed of 300±10 mm/min.

Storage Conditions

- (1) Temperature: +5 to +35°C, Relative Humidity (RH): 45 to 75%.
- (2) Non-corrosive environment

Johanson Technology, Inc. reserves the right to make design changes without notice.

All sales are subject to Johanson Technology, Inc. terms and conditions.