

---

# ***Johanson Technology Inc.***

## ***JTI S42E Library Installation Instructions for ADS 2009 Update1***

**Johanson Technology Inc. Applications Support**

<http://www.johansontechnology.com/en/ask-a-technical-question.html>

**Tel: (805) 389-1166 [www.johansontechnology.com](http://www.johansontechnology.com)**

JTI S42E Version 1.5

Written by : Tony Guilin, RF Applications Engineer ( [aguilin@johansontechnology.com](mailto:aguilin@johansontechnology.com) )



# *Overview*

---

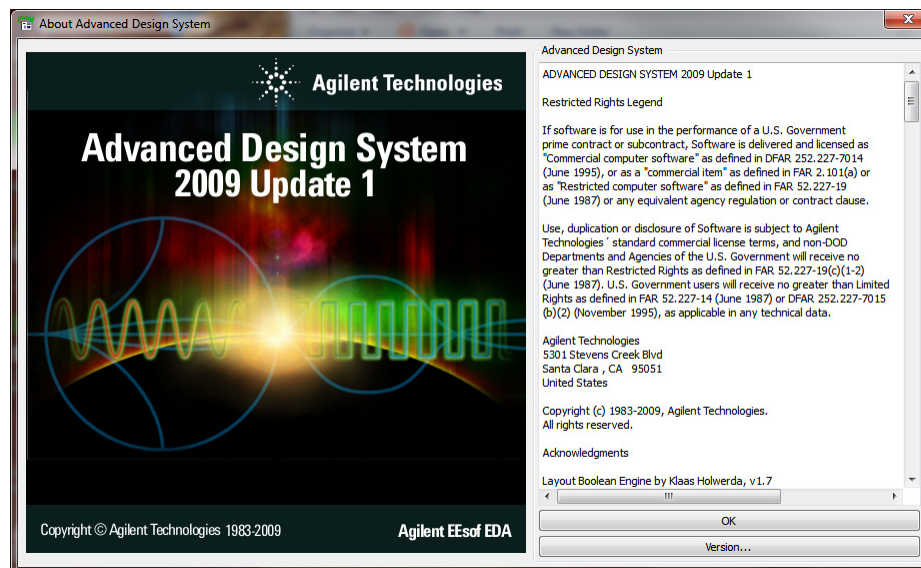
- These instructions will briefly cover the installation of Johanson Technology libraries for Agilent's Advanced Design System (ADS) version 2009 Update 1

# Requirements

- Agilent ADS 2009 Update 1
- Johanson Technology Inc. libraries

□ Libraries located on

<http://www.johansontechnology.com/en/designer-libraries/agilent-ads-libraries.html>



# *Important Notes*

---

- During testing of libraries, it was observed file paths with spaces (e.g. c:\folder here\libraries) caused trivial errors



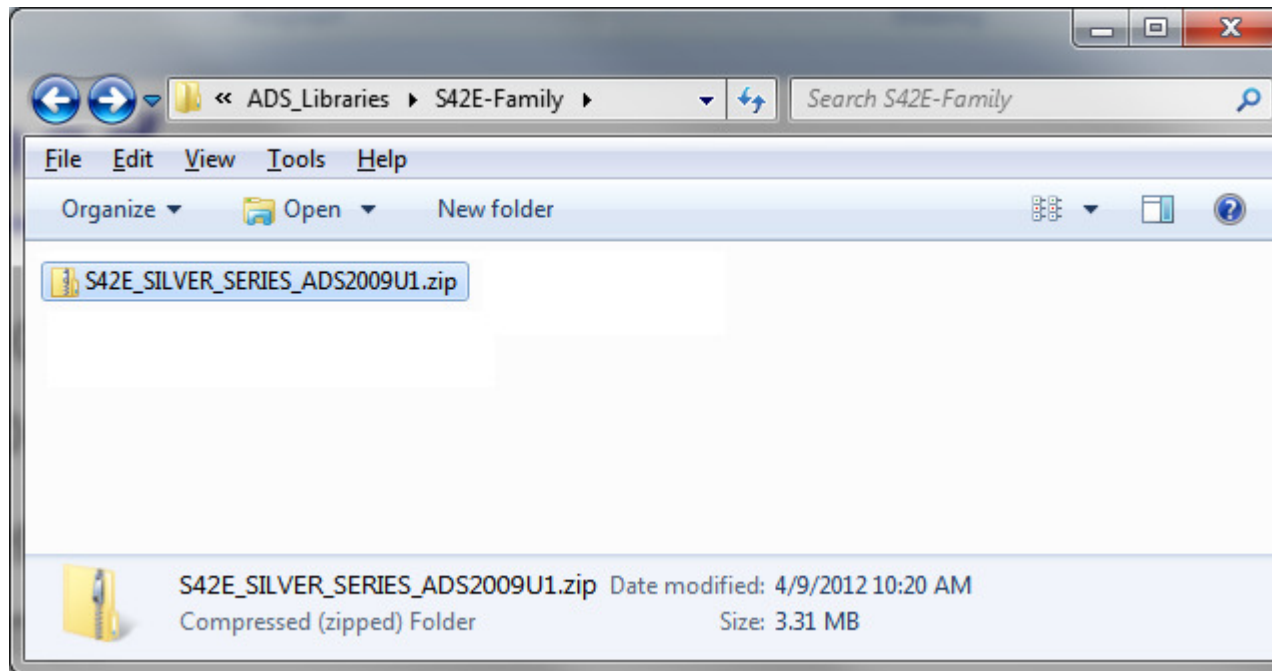
There is a 'space' character between 'folder' and 'here'.

- It is highly recommended to download and save libraries in a root folder with no spaces (e.g. c:\jti\...)

# Download

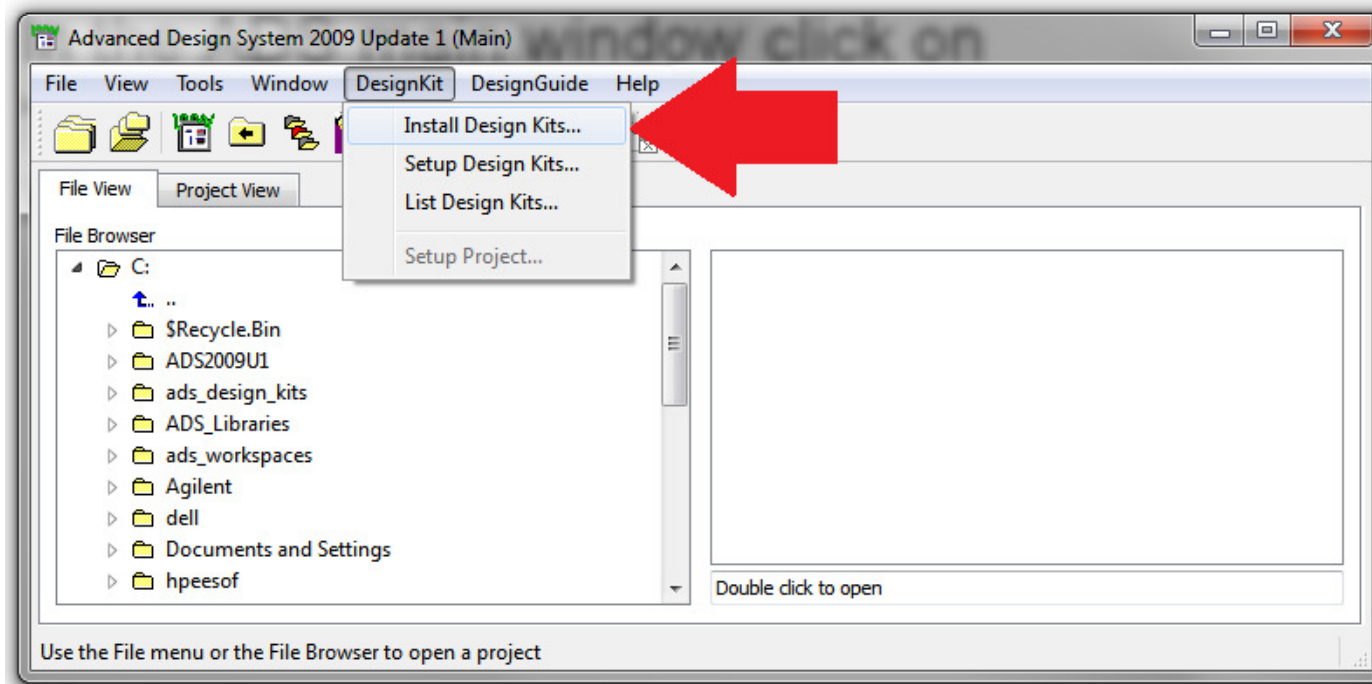
---

- Download all libraries from Johanson Technology website
- Silver Series Libraries are distributed in \*.zip format



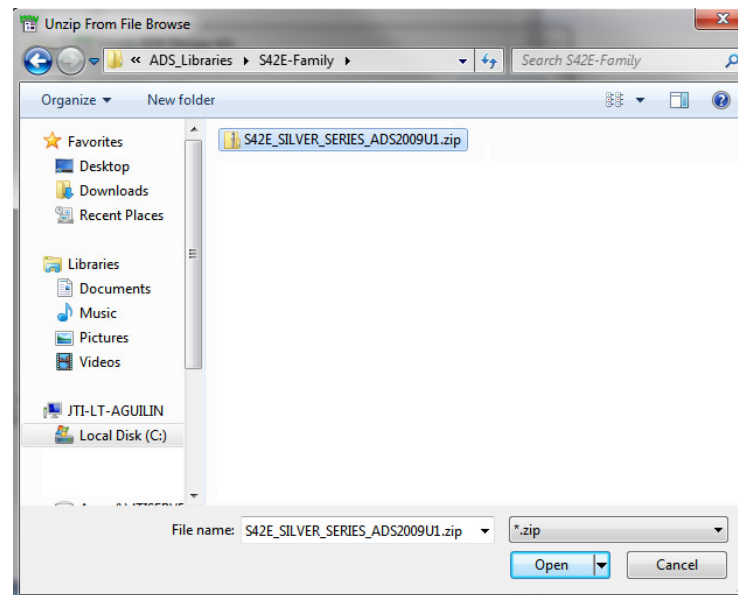
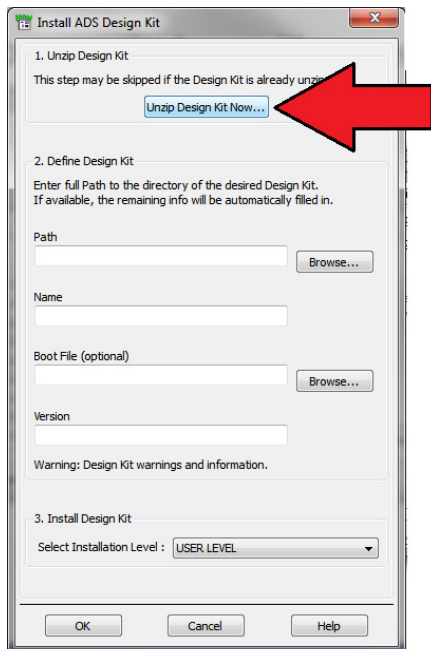
# *Installing Files in ADS 2009U1*

- Launch ADS 2009U1
- In the ADS main window click on “DesignKits” and Select “Install Design Kits...”



# Browse for Zipped Library File

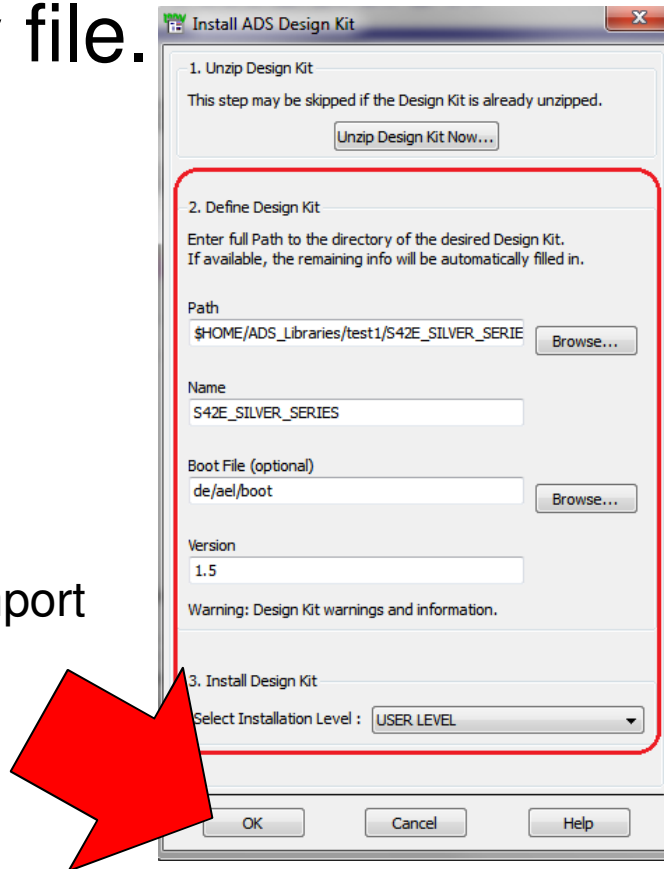
- The library file will need to be unzipped prior to installing in ADS
- Click on “Unzip Design Kit Now” in the ADS Main window.
- Select S42E\_SILVER\_SERIES\_ADS2009U1.zip
- Select a directory where to unzip library



# Finalizing Import

- If library was successfully selected the “Define Design Kit” section is populated with applicable information about the library file.

Click “OK” to complete the import

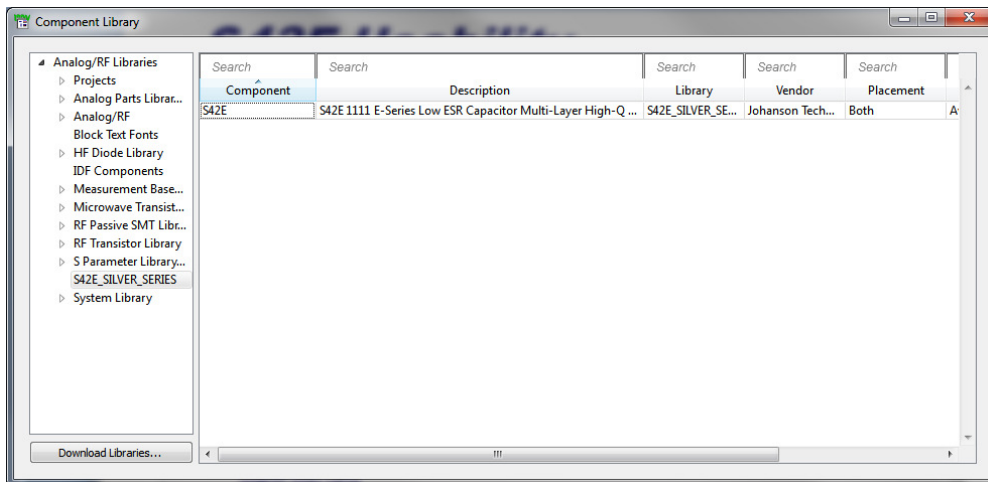




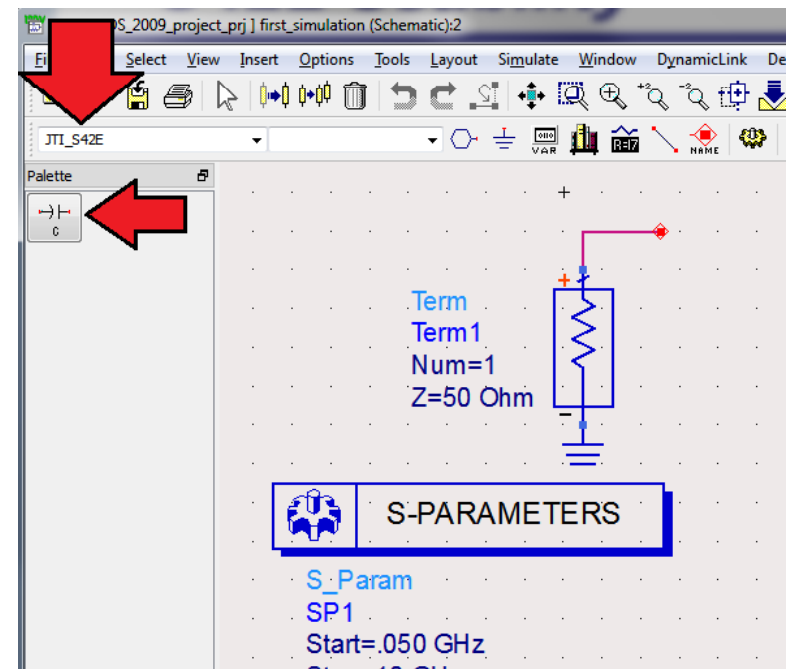
# S42E Usability

- The library import performs two tasks
  - Import Library into the ADS “Component Library List”
  - Import pallet of S42E Series

Component Library List

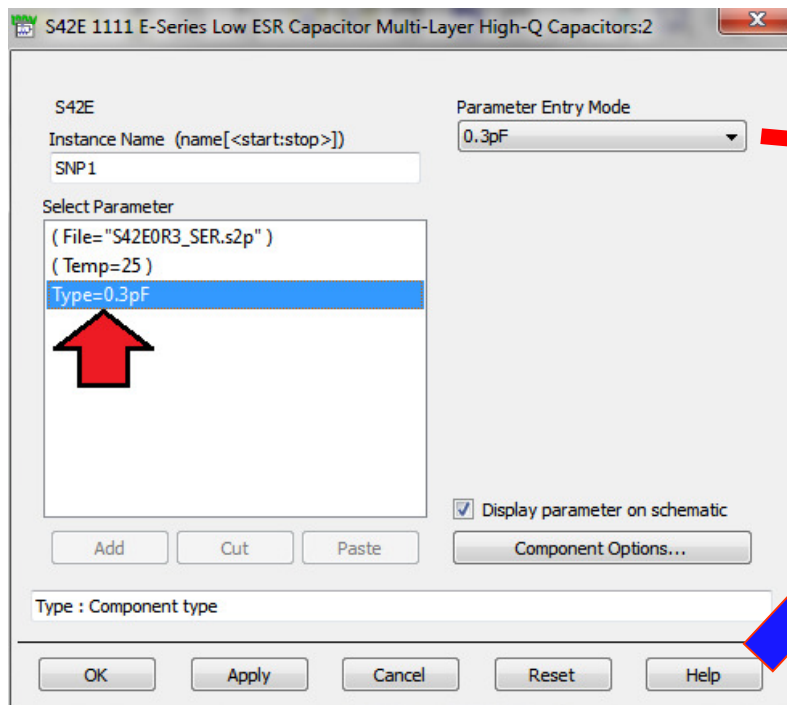


S42E Pallet

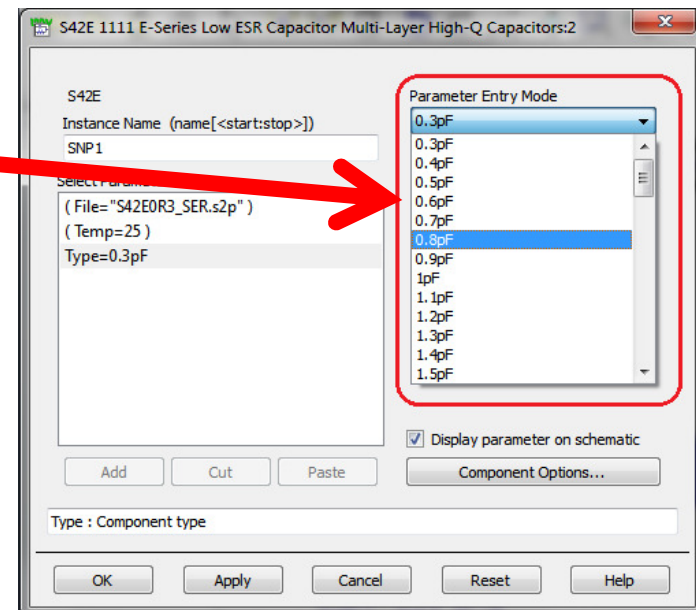


# S42E Model Usability

- The latest variations of the S42E capacitors are available in 1- ADS part.
- Different values are selected inside part parameters.
- Click on “Type=“ in the “Select Parameter” list
- Choose any of the available values of capacitance

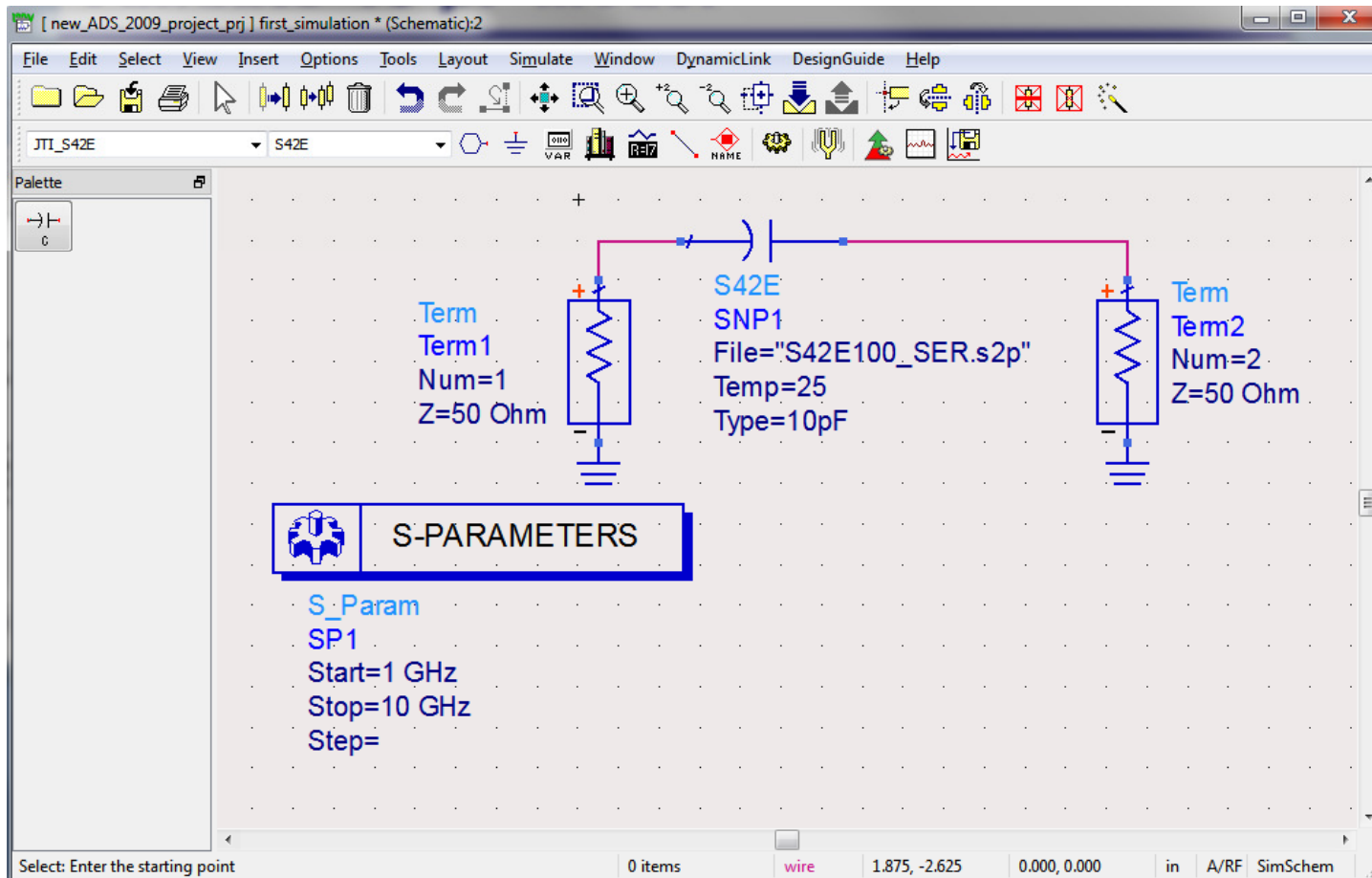


**Note:**  
The Help  
menu links  
to the S42E  
website,



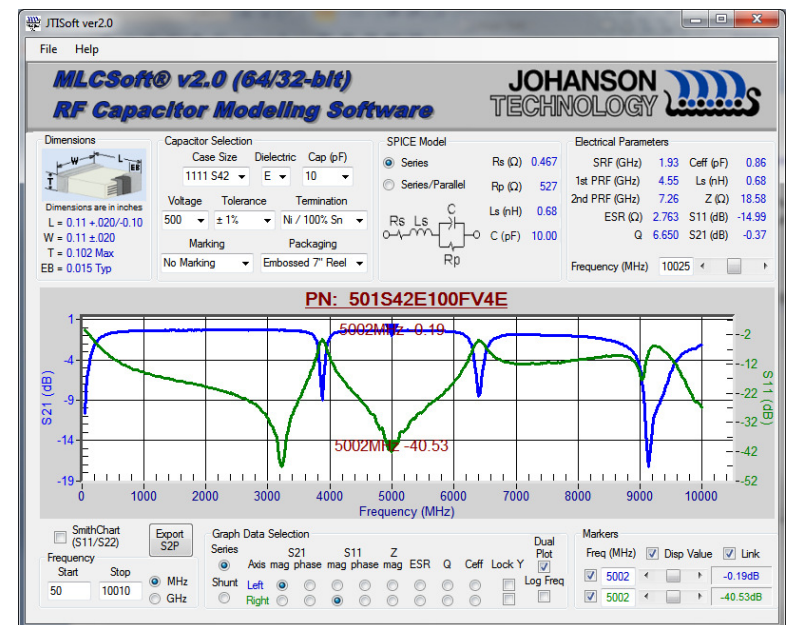
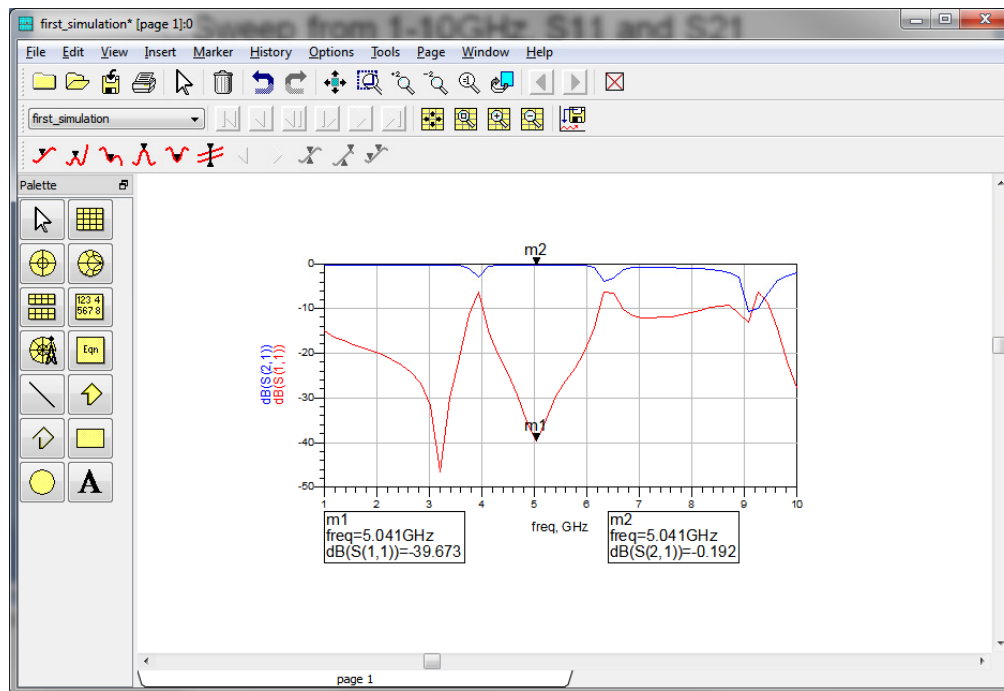
# Validate 10 pF Model

- Using the 10pF value of a S42E MLCC
  - Sweep from 1-10GHz, S11 and S21



# Sample Correlation

- Response plots in ADS correlate with Johanson Technology JTISoft tool\*.



\*JTISoft can be downloaded from <http://www.johansontechnology.com/en/modeling-software.html>

## ***For: Questions, Samples, Comments***

---

- We welcome your feedback
  - <http://www.johansontechnology.com/en/ask-a-technical-question.html>